

**Afri-Devo Pty (Ltd)**

65 Swansway, Heuwelsig

Kimberley 8300

Tel: +27 (0) 53 861 1514

website: [www.afridevo.co.za](http://www.afridevo.co.za)

AFRI-DEVO  
CONSTRUCTION & PROPERTY DEVELOPMENT





Property development is more than building material, bulk services and profit, it is about creating environments or habitats that enhance the lives of people, Human Beings.

Andrew Kesiamang  
Managing Director



## About us

AFRI-DEVO (Pty) Ltd is a fully black owned company trading in construction and property development. The company was born and registered in South Africa in 2004 [Reg. 2004/009956] and has since been based in Kimberley, Northern Cape.

We are a company that is driven by an inborn passion for the work we do and are committed to maintaining the highest standards of quality management, cost management and delivery time management. We are equally driven by the imperative need to produce high corporate governance standards, sound business ethnics and productive social investment programmes that reflect our true image as a company that wants to be counted amongst the very best in the industry.

We are about people first. We strongly believe that it is through investing our time, effort and resources on our staff, clients and local communities that our company will be elevated to the position of leadership.

We believe that our work grants us a perfect opportunity to integrate people from diverse economic and racial backgrounds, wherein, we are also successful in reaching out to previously disadvantaged groupings such as women and the youth.

We build solid homes. This is what we do. Not only for people, organizations and businesses, but for ideologies too because we believe that everything begins with a dream. As such, we are a company that encourages and inspires dreams. We always stand ready to support those with the right discipline and tenacity to chase after their dreams, especially dreams that seek to emancipate our people, our country and the African continent from the prevailing shackles of under-development, hence our pay-off line:

**ENHANCING AFRICA'S DEVELOPMENT.**



## Our mission & vision

Our mission is to be a company that is trusted to produce quality work in a manner that leverages our business interests and client satisfaction.

Our vision is to become a leader in the production of strategic construction, property development, engineering and manufacturing projects that contribute significantly towards the development of our people and continent.

## Our culture & values

The following phrases embody what is the **AFRI-DEVO** culture and values. Honesty. Humility. Integrity. Optimism. People First and Always.





## Services & market focus

Presently, much of our services are in construction and property development, with a clear view to venture into related sectors such as manufacturing, civil and electrical engineering. Whilst our work focus will always be determined by on-going market analysis as well as emerging local and global trends, we are currently contesting for work in the following areas:

1. Government and private sector construction tenders
2. Commercial, retail, office and industrial developments
3. Residential property developments
4. Township developments with commercial pedigree
5. Acquisition of land for the development of any of the above.

## Portfolio of works

- Hillcrest Prestige (22 upmarket town house complex in Kimberley): R17 270 000.00
- Standard Bank shop fittings (Kimberley mega branch & Upington branch): R6 531 135.80
- New Premier Auto dealership, Kimberley: R8 279 289.55
- Department of Public Works, Pretoria (Minister & Deputy Minister's offices refurbishment): R4 700 000.00
- National Institute for Higher Education, Kimberley (William Pescod buildings & Phatsimang College renovations and alterations) R6 099 700.00
- O. Graven family trust home, Kimberley: R3 529 277.50
- NHBRC/Department of Housing, Eastern Cape (RDP houses rectifications): R21 330 452.57
- New Mapoteng Clinic (Khatu): R6 313 831.36



## Moving towards the future

We are currently implementing a 5-year strategic plan that will see the company develop towards its intended vision of a well organized, well performing and professionally managed entity that has growing footprint within the African continent. This strategic plan is divided into three distinct phases as following.

### **PHASE 1:**

which runs from 2009 to 2010, is about getting our house in order, so to speak. It is about re-inventing our company to emerge as a true brand that is armed with sound operational systems and governing policies.

### **PHASE 2:**

which runs from 2010 to 2013, is about building a profitable and sustainable platform which will provide us with a basis from which to grow. The three key priorities during this phase are:

- to grow company equity through strengthened asset base as well as through strategic partnerships and investments.
- to solidify and attract new stakeholder relationships through principles of relationship marketing.
- to prepare for continental growth and identify suitable leads in this regard.

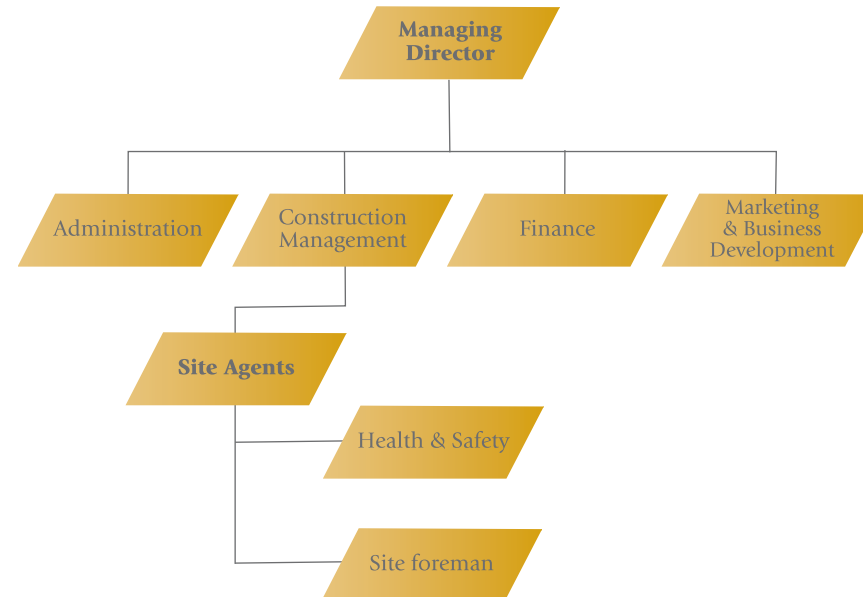
### **PHASE 3:**

which runs from 2013 to 2015, is about establishing pathways into Africa and capturing key markets in the continent. From here onwards, we enter a new growth cycle that will call for fresh strategic planning.



## Organisational structure

The current structure under which the company is operating is given below, and also included are our managing partners. This is the structure that will be sustaining the company to the end of phase1 of the strategic plan implementation as given on the previous page.







## Company details

**Company Name:** Afri-Devo (Pty) Ltd

**Registered Name:** Afri-Devo (Pty) Ltd

**Registration Number:** 2004/009956/07

**Vat Number:** 4950218711

**Income Tax Number:** 9592/341/15/1

**Physical Address:** 65 Swansway, Heuwelsig, Kimberley, 8301

**Postal Address:** P. O. Box 1058, Kimberley, 8300

**Bank:** Standard Bank

**Branch:** Kimberly

**Branch Code:** 051002

**Account Type:** Business Current Account

**Account Number:** 230042996

## Managing partners

**Legal Services:** Logan Naidoo Attorneys

**Bankers:** Standard Bank

**Architecture:** A & H Architect Designs

**Civil Services:** MVD Civil Consultants

**Quantity Surveyor:** Dudley Dally

**Marketing and Advertising:** Elements

